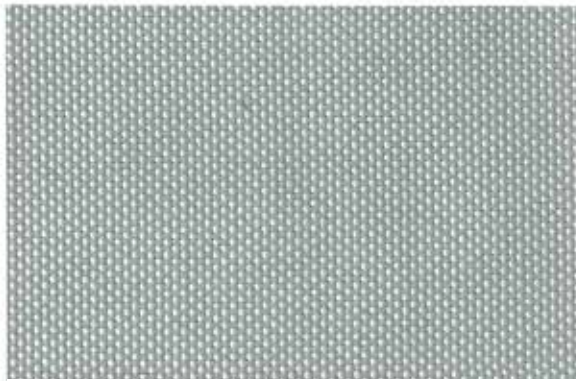




col. 01



col. 18



col. 56



col. 57

Article

SOLO

Composition

51% PES Trevira CS, 49% PES

Width

300 cm

Weight

277 g/m²

Flame retardant

**IMO A 652- 16
DIN 4102- B1
BS5867 part 2 type B&C
BS5852 CRIB 5
EN 1021 1/2**

Light fastness

**ISO 105-B02
3-4**