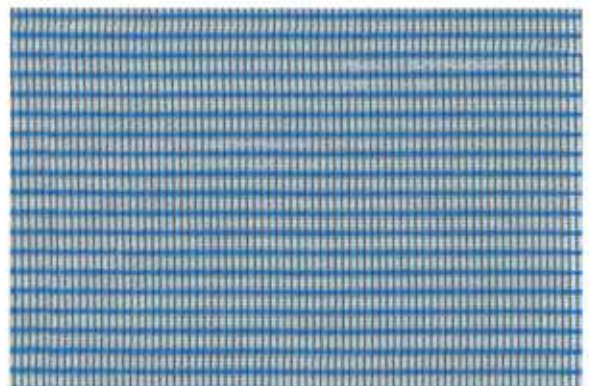
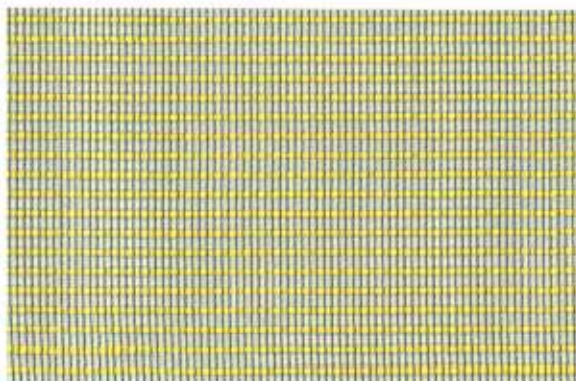


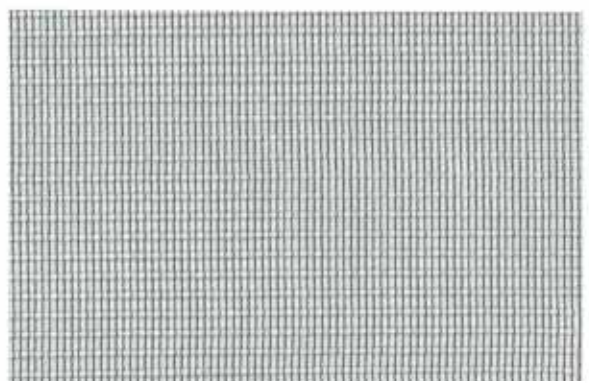
col. 08



col. 32



col. 43



col. 60

Article

**HERA**

Composition

**100% PES Trevira CS**

Width

**300 cm**

Weight

**70 g/m<sup>2</sup>**

Flame retardant

**DIN 4102- B1  
NF P 92-504  
NF P 92-503, 92-505, 92-507  
BS 5867 part 2 type C**

Light fastness

**5-6**