

Roccia



1504



2501



1511



1502



1503



3506



3502



2502



3503



4501



3012



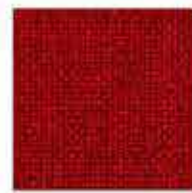
4512



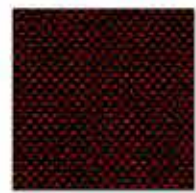
5504



4504



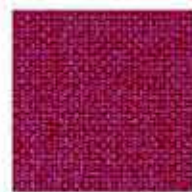
4011



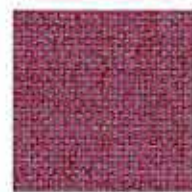
8514



5505



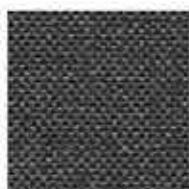
5005



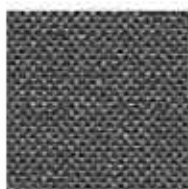
5512



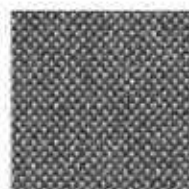
8515



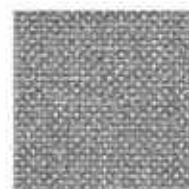
8504



8030



8502



8501



2517



7512



7501



7504



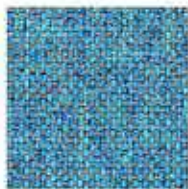
7016



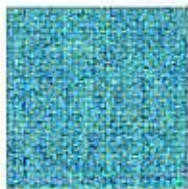
7502



7503



6522



6517



6526



6055



6536



6506



6505



6503



6502



6501



5502

**FIDIVI\***

TESSITURA VERGNANO

**CARATTERISTICHE PRINCIPALI - PRINCIPAL CHARACTERISTICS**  
**CARACTERISTIQUES PRINCIPALES - HAUPT EIGENSCHAFTEN**

Date 31/07/2019  
 Edition 04

**ROCCIA**

Caratteristica Characteristic Caractéristique Charakterdarsteller	Norma Norm Norme Norm	Tolleranza Tolerance Tolérance Toleranz	Dichiarato Declared Déclaré Deklariert
Peso (g/ml) – Weight (g/lm) Poids (g/ml) - Gewicht (g/lm)	EN 12127	± 5 %	350
Peso (g/m <sup>2</sup> ) - Weight (g/m <sup>2</sup> ) Poids (g/m <sup>2</sup> ) - Gewicht (g/m <sup>2</sup> )	EN 12127	± 5 %	250
Altezza (cm) - Width (cm) Largeur (cm) - Breite (cm)	-----	± 2 %	140
Resistenza all'abrasione (cicli) Abrasion resistance (rubs) Résistance à l'abrasion (tours) Scheuerfestigkeit (Scheuertouren)	ISO 12947-2 (Martindale)	± 10 %	70000
Solidità del colore alla luce (scala dei blu) Light fastness (blue scale) Solidité à la lumière (échelle des bleu) Lichtechtheit (Blaumaßstabe)	ISO 105-B02 (Xenotest)	da 5 a 8	6
Solidità del colore allo sfregamento (scala dei grigi) Fastness to rubbing (grey scale) Solidité au frottement (échelle des gris) Reibechtheit (Graumaßstabe)	ISO 105-X12 (Crockmeter)	da 4 a 5	4/5
Pilling (2000 cicli) - Pilling (2000 rubs) Pilling (2000 tours) - Pilling (2000 scheuertouren)	ISO 12945-2	da 4 a 5	5
Valore camera riverberante (α <sub>w</sub> ) Reverberating chamber value (α <sub>w</sub> ) Valeur de la chambre réverbérante (α <sub>w</sub> ) Nachhallkammerwert (α <sub>w</sub> )	ISO 354	da 0,5 a 0,7	0,6
Composizione Composition Composition Zusammensetzung	100% POLIESTERE Trade Mark TREVIRA CS 100% POLYESTER Trade Mark TREVIRA CS 100% POLYESTER Trade Mark TREVIRA CS 100% POLYESTER Trade Mark TREVIRA CS		

Leggere differenze di colore tra un lotto e l'altro sono da considerarsi normali  
 Slight colour differences between one lot and another have to be considered within commercial tolerance  
 Légères différences de couleur entre un lot et l'autre doivent être considérés comme étant normales  
 Leichte Farbunterschiede sind zwischen zwei Partien als normal zu betrachten

**Reazione al fuoco – Flammability - Classement au feu – Feuersicherung**

UNI 9174 - 8456 Class C1  
 UNI 9175 Class 1 IM  
 DIN 4102 Class B1  
 NF 92501-7 Class M1  
 NF D 60013 Class AM18  
 EN 1021-1 & 2  
 BS Crib 5  
 BS 7176 Class Medium Hazard  
 EN 13773 Class 1  
 OENORM 3800-1 Class B1,Q1,TR1  
 California TB117  
 USA NFPA 701  
 USA NFPA 260  
 IMO Part 8 Upholstery

Altri test fuoco possono essere superati, il superamento di alcuni test fuoco può dipendere dalla schiuma utilizzata  
 Will also pass other flammability standards. Flame retardant performance is dependent upon the foam used  
 Autres tests feu peuvent être passés. La performance au feu dépend de la mousse utilisée  
 Wird auch andere Brandschutzstandards erfüllen. Die flammhemmende Leistung ist anhängig von dem verwendeten Schaum

**Manutenzione e lavaggio – Cleaning and washing – Nettoyage et lavage – Reinigung und waschen**

