

CONNECT

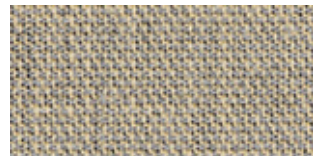
by Gabriel



60152



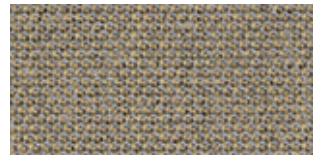
60147



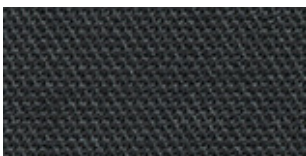
61207



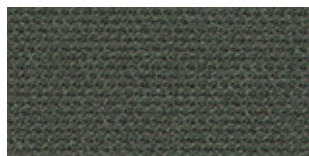
60146



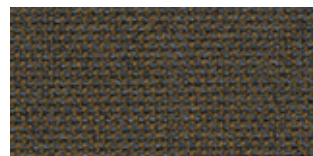
61208



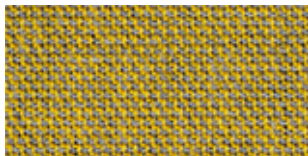
60999



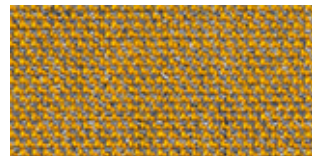
60153



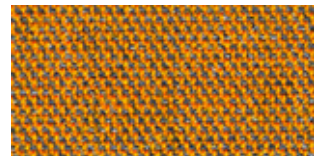
61210



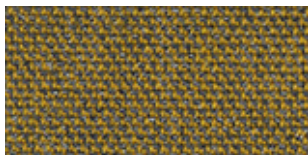
62110



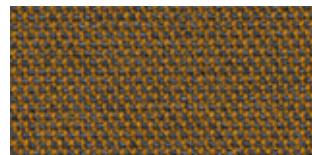
62109



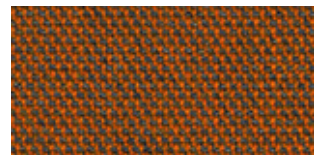
63106



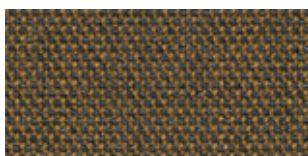
62111



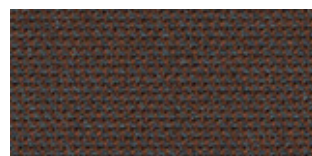
61211



63107



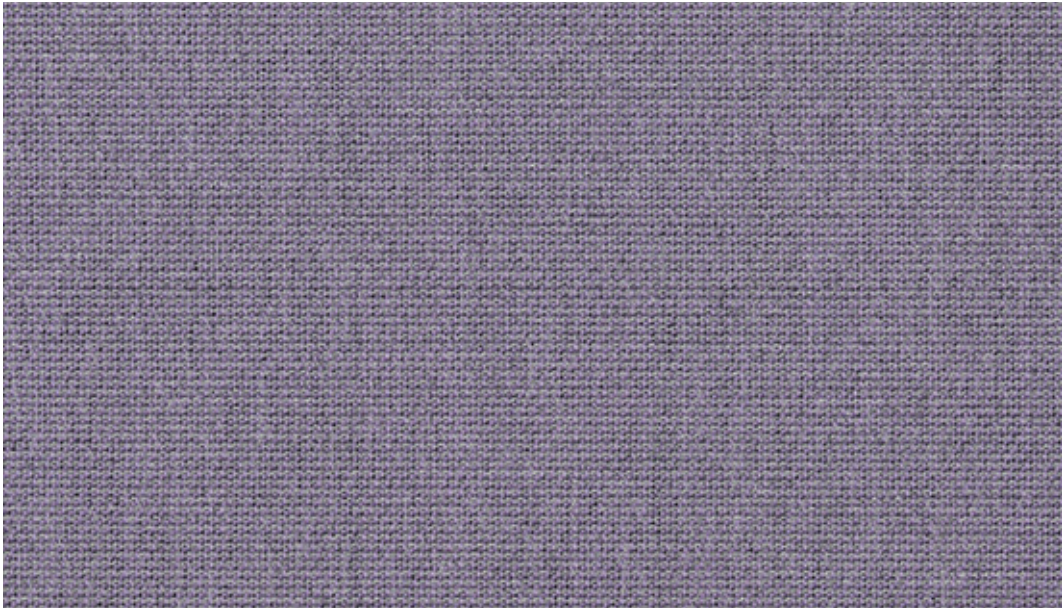
61209



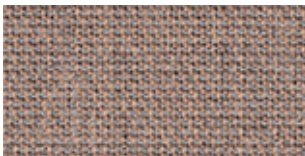
61212



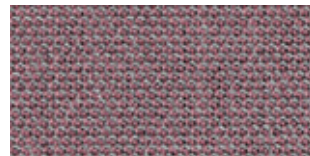
65122



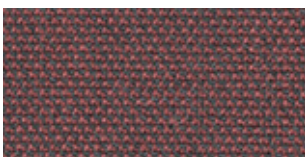
65128



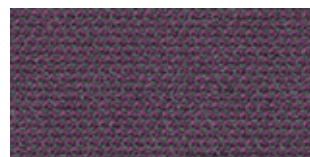
64229



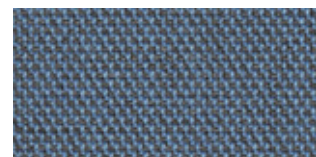
65125



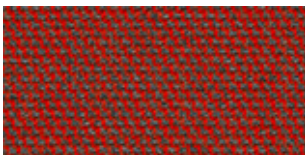
64230



65126



66207



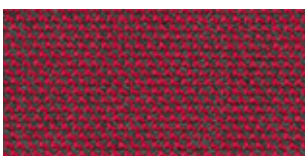
64231



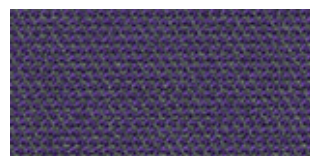
65128



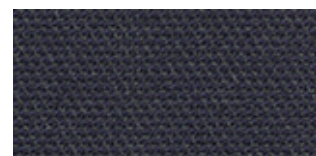
66208



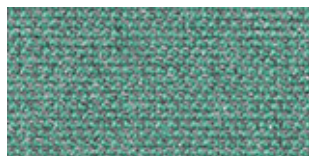
64232



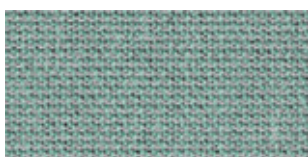
65124



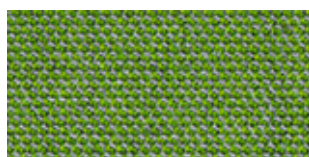
65127



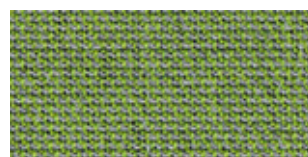
67113



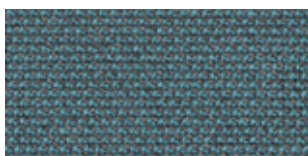
66203



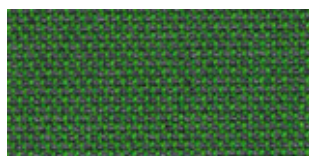
68230



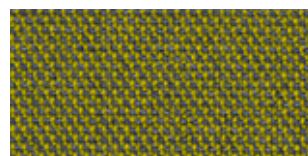
68229



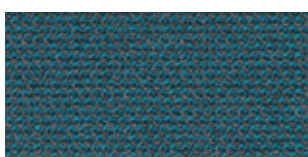
66205



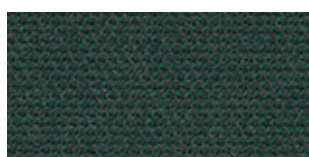
68231



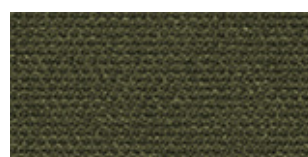
68232



66206




67115



68233

CONNECT

Design no.	2515/2516/2517/2518
Application	contract
Composition	48% Wool · 41% post-consumer rec pes · 9% pa · 2% pes
Weight	370 g/lm (11.93 oz/lin.yd.)
Width	140 cm (55 inches)
Abrasion	90,000 Martindale · 60,000 Martindale (US)
Pilling	4-5
Light fastness	5-7
Rubbing fastness	4-5/4-5
Maintenance	dry cleaning
Flammability	EN 1021 1&2 · BS 5852 Crib 5 · CA TB 117-2013 · UNI 9175 C-1 IM · Contains no flame retardant chemicals
US ACT	
Design/colours	Cenk Kivrikoglu



Subject to changes and colour differences
Will pass other standards – for complete specifications: gabriel.dk