



**TWIST™**  
**TWIST MELANGE™**

---

by Gabriel



Twist 68120



Twist Melange 68120



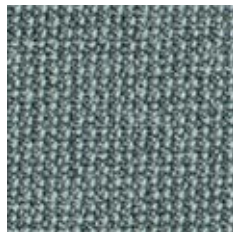
Twist 68119



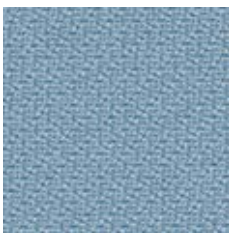
Twist Melange 68119



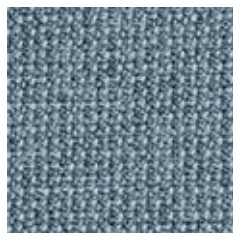
Twist 68118



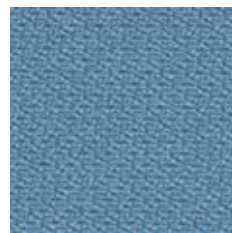
Twist Melange 68118



Twist 67004



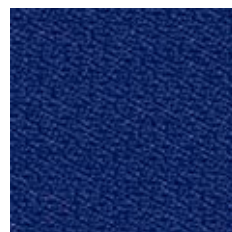
Twist Melange 67004



Twist 66018



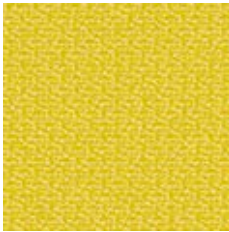
Twist Melange 66018



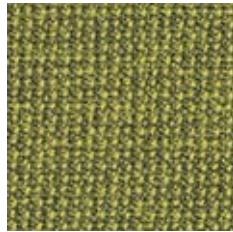
Twist 65018



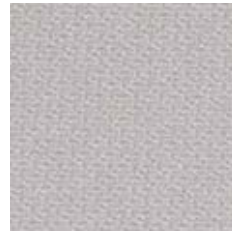
Twist Melange 65018



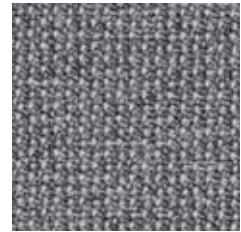
Twist 62066



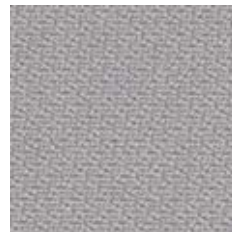
Twist Melange 62066



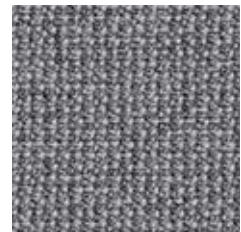
Twist 60076



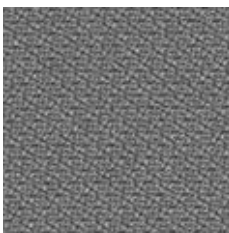
Twist Melange 60076



Twist 60004



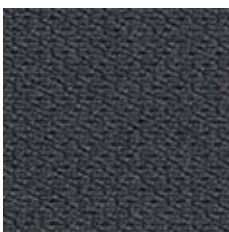
Twist Melange 60004



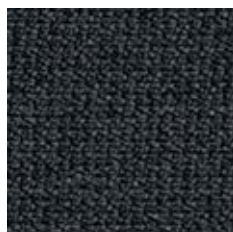
Twist 60011



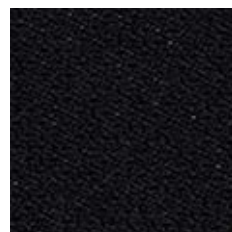
Twist Melange 60011



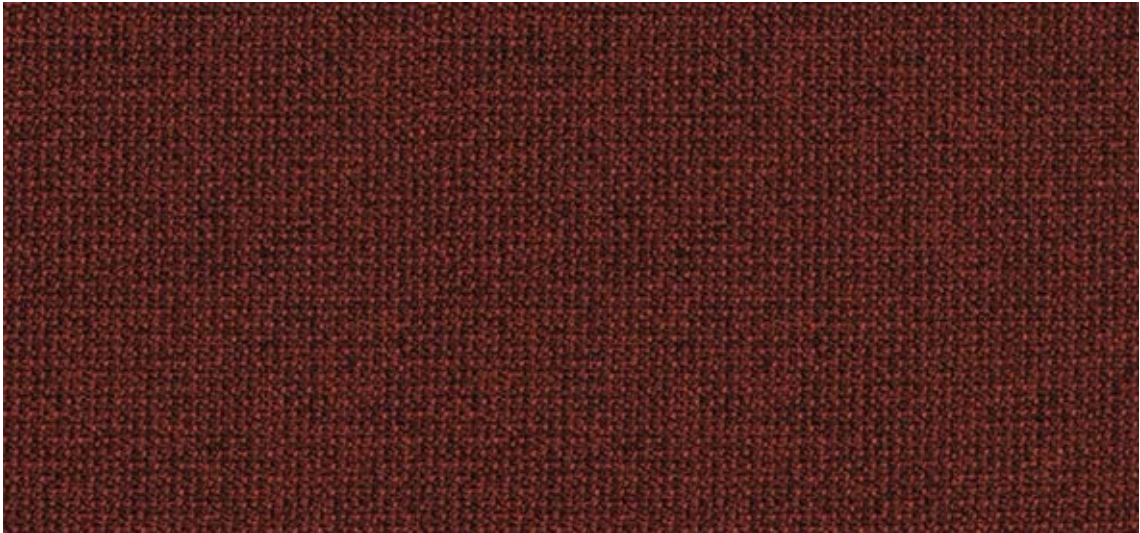
Twist 60021



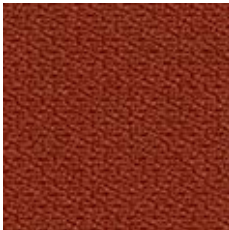
Twist Melange 60021



Twist 60999



Twist Melange 63075



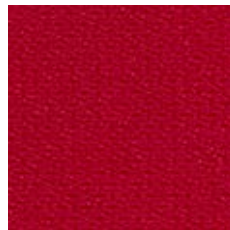
Twist 63075



Twist 63012



Twist Melange 63012



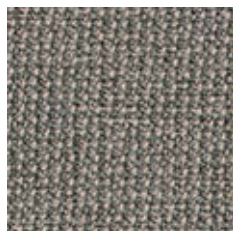
Twist 64013



Twist Melange 64013



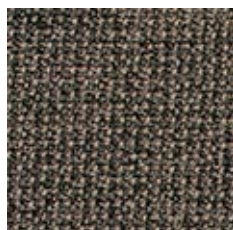
Twist 61104



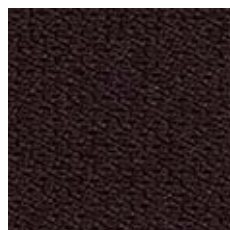
Twist Melange 61104



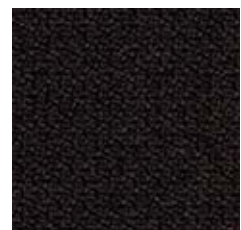
Twist 61103



Twist Melange 61103



Twist 61102



Twist Melange 61102

# TWIST TWIST MELANGE

Design no.	2445/2446/2447
Application	screen
Composition	100% Trevira cs
Weight	370 g/lm (11.93 oz/lin.yd.)
Width	170 cm (67 inches)
Light fastness	5-7
Rubbing fastness	4-5/4-5
Maintenance	wiping down with water
Flammability	ASTM E 84 C-I · NF P 92-503-507 M1 · DIN 4102- B1 · BS 476-7 C-I · UNI 9177 C-1 IM · UNI 9175 C-1 IM · UNI 9174 C-1 IM · UNI 8457 C-1 IM · DIN 13501 - B-s1,d0
US ACT	
Design/colours	Mette Krebs Petersen



Subject to changes and colour differences  
Will pass other standards – for complete specifications: gabriel.dk